

A green rectangular road sign with rounded corners and a white border. The sign is mounted on two silver metal posts. The text on the sign is in white, bold, sans-serif capital letters. The word "COLLEGE" is on the top line, and "JUST AHEAD" is on the bottom line.

COLLEGE
JUST AHEAD

Where do I begin?

JANUARY 2019

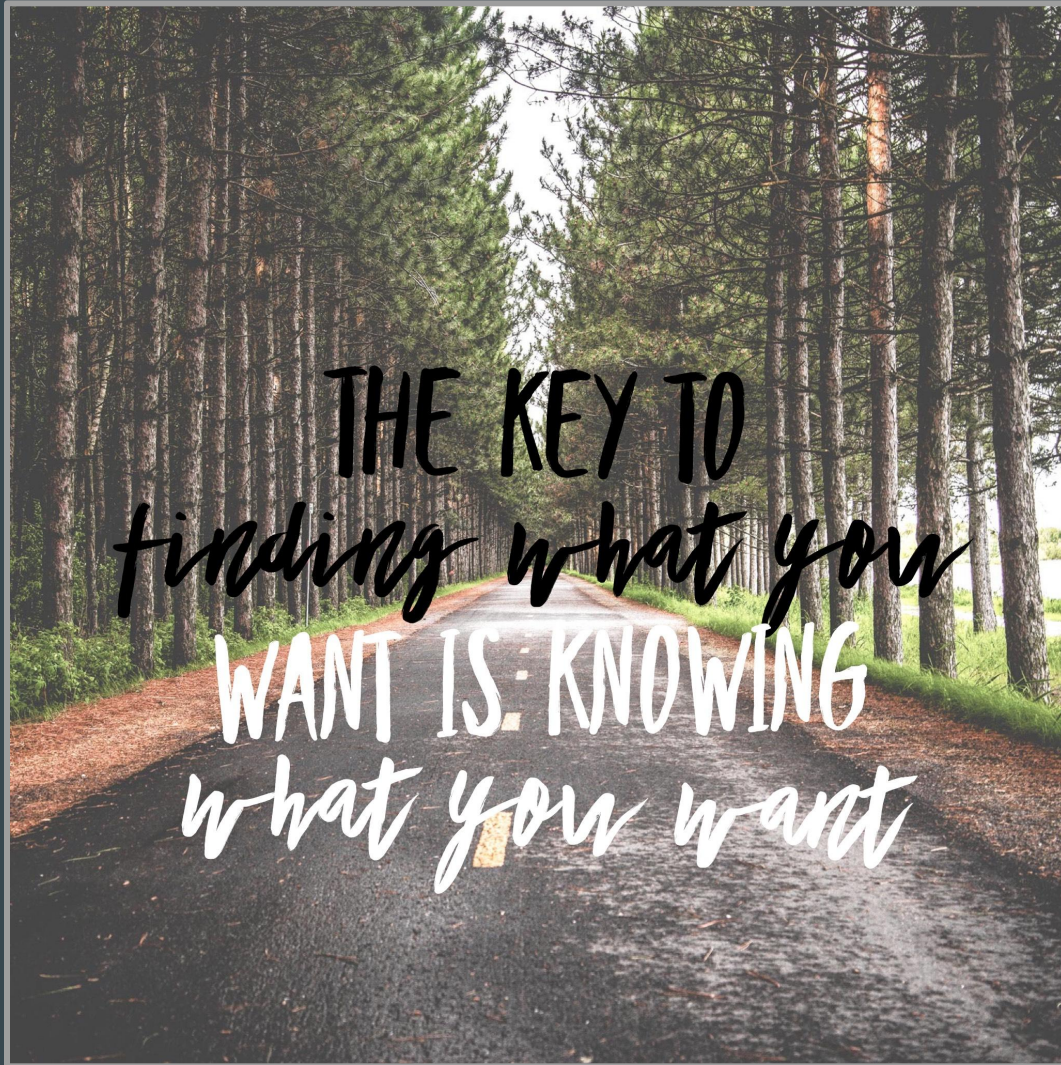
Beginning the College Search Process

THE GOAL:

FIND
COLLEGES
THAT ARE THE
RIGHT FIT
FOR YOU!



Decision Factors:



- SIZE
- LOCATION
- CAMPUS PERSONALITY
- ENTRANCE REQUIREMENTS
- MAJORS AVAILABLE
- THE SCHOOL'S COMMITMENT TO A PARTICULAR MAJOR
- DIVERSITY
- RELIGIOUS AFFILIATION
- ATHLETICS/ACTIVITIES
- REPUTATION
- COST...

Considering the Cost...

\$

- HOW MUCH CAN YOUR FAMILY AFFORD?
 - (INCLUDING TUITION, BOOKS, TRAVEL, SPENDING MONEY, ETC)
- PUBLIC SCHOOL
 - LOWER TUITION
- PRIVATE SCHOOL
 - MAY HAVE MORE FINANCIAL RESOURCES & OFFER MORE AID
- DON'T LET THE INITIAL COST OF COLLEGE DISSUADE YOU FROM APPLYING
- CONSIDER APPLYING FOR SCHOLARSHIPS...

*** PLEASE VISIT NAVIANCE REGULARLY TO STAY INFORMED REGARDING SCHOLARSHIP AND FINANCIAL AID LINKS! ***



Post-Secondary Options:

4 - YEAR COLLEGES AND UNIVERSITIES

- LIBERAL ARTS SCHOOLS
- IVY LEAGUE SCHOOLS
- PRIVATE COLLEGES
- PUBLIC COLLEGES
- TECHNICAL UNIVERSITIES

OTHER OPTIONS

- GAP YEAR
- ENTERING THE WORKFORCE
- MILITARY

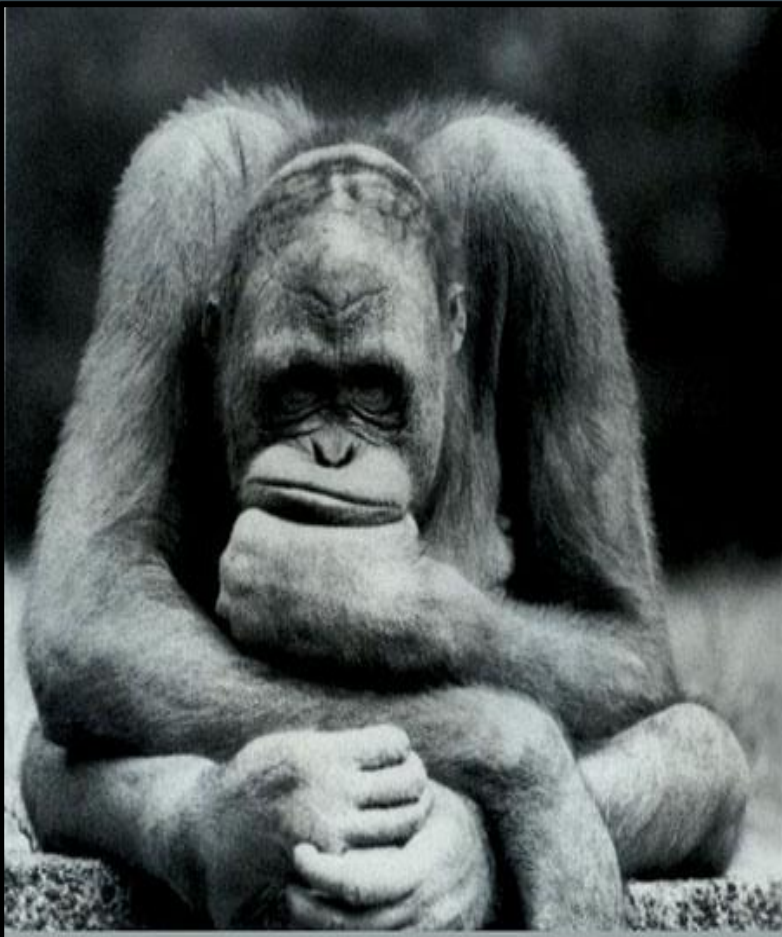
2 -YEAR COLLEGES

- TWO-YEAR PRIVATE SCHOOLS
- COMMUNITY COLLEGES
- GUARANTEED TRANSFER PROGRAMS

SPECIALIZED INSTITUTIONS

- MUSIC CONSERVATORIES
- ART SCHOOLS
- CULINARY SCHOOLS
- HEALTH SCIENCES
- TECHNICAL SCHOOLS

Getting Started



Oh what to to, what to dooo?

- BEGIN IN THE WINTER OF YOUR JUNIOR YEAR
- TALK TO OLDER FRIENDS/FAMILY ABOUT THEIR EXPERIENCES
- IDENTIFY POSSIBILITIES
- KNOW YOUR RESOURCES
- RESEARCH

Your College Search Should Also Include:

COLLEGE VISITS!

- BEST TO GO WHEN SCHOOL IS IN SESSION
- TAKE A CAMPUS TOUR
- ATTEND AN OPEN HOUSE
- OVERNIGHT STAYS
- WITH A SIBLING OR FRIEND
- VISIT ACTUAL CLASSES WHILE IN SESSION
- INTERVIEW?



Helpful Websites for the College Search:

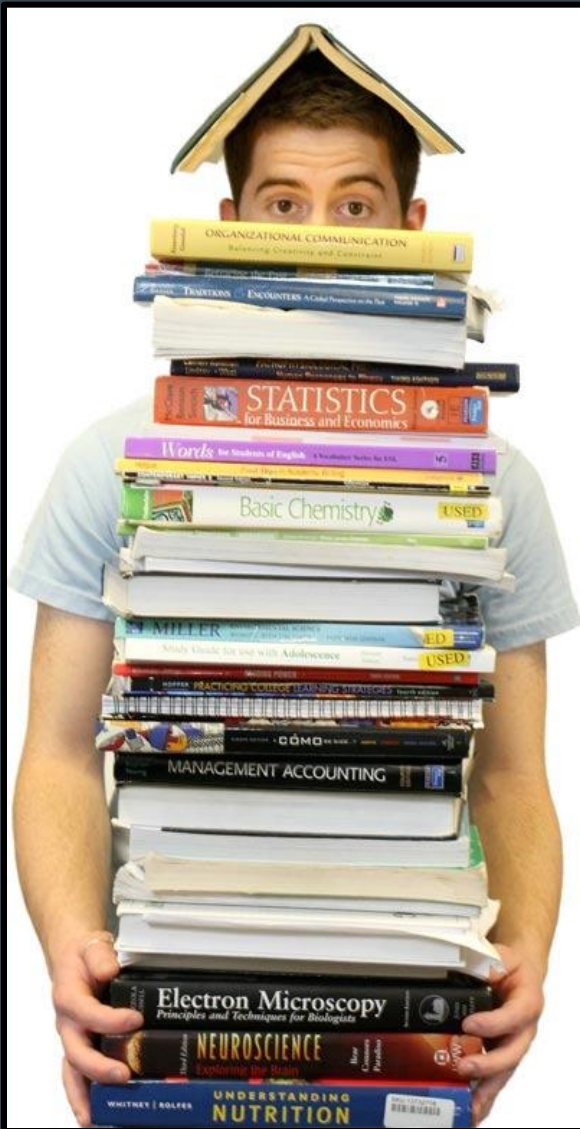
- CSO COLLEGE CENTER: WWW.CSOCOLLEGECENTER.ORG
- THE COLLEGE BOARD: WWW.BIGFUTURE.COLLEGEBOARD.ORG
- KNOWHOW2GO: WWW.KNOWHOW2GO.ORG
- HOBSON'S COLLEGEVIEW: WWW.COLLEGEVIEW.COM
- PETERSON'S: WWW.PETERSONS.COM
- COLLEGES THAT CHANGE LIVES: WWW.CTCL.ORG
- COLLEGE VISITS: WWW.COLLEGE-VISITS.COM

Junior College Planning Meetings



- COUNSELORS
 - PRESENT TO JUNIORS IN SMALL GROUPS
 - MEET WITH EACH STUDENT INDIVIDUALLY
 - WILL MEET WITH STUDENTS AND PARENTS UPON REQUEST
- PARENTS AND STUDENTS CAN USE NAVIANCE AT HOME

What are colleges looking for?



- GRADES IN CORE ACADEMIC CLASSES
 - STRENGTH OF PROGRAM
- OVERALL GPA
- SAT/ACT TESTS
- ESSAY OR WRITING SAMPLE
- TEACHER/COUNSELOR RECOMMENDATIONS
- ACTIVITIES/SPECIAL TALENTS
- VISITS AND INTERVIEWS

Admissions Vocabulary:

- COMMON APP: AN ONLINE COLLEGE APPLICATION THAT ALLOWS STUDENTS TO APPLY TO ANY OF THE 500 SCHOOLS THAT ARE A MEMBER OF IT.
- EARLY DECISION: BINDING ADMISSION PROCESS WHERE THE STUDENT APPLIES TO THEIR FIRST DECISION SCHOOL AND, IF ACCEPTED, THEY MUST WITHDRAW ALL OTHER APPLICATIONS FROM OTHER SCHOOLS (AROUND NOV.1)
- EARLY ACTION: THE NON-BINDING ADMISSION PROCESS WHEREBY THE STUDENT APPLIES TO COLLEGE(S) IN THE FALL AND IT TYPICALLY HAS AN EARLIER DEADLINE (AROUND NOV. 15)
- REGULAR ADMISSION: NON-BINDING ADMISSION PROCESS WHERE STUDENTS APPLY IN THE WINTER, AND LEARN OF ACCEPTANCE OR DENIAL IN THE SPRING.
- RESTRICTIVE EARLY ACTION: NON-BINDING ADMISSION PROCESS WHICH RESTRICTS HOW STUDENTS CAN APPLY TO OTHER COLLEGES.
- ROLLING ADMISSION: STUDENTS ARE OFFERED OR DENIED ADMISSION THROUGHOUT THE CALENDAR YEAR.
- PRIORITY ADMISSION: APPLICATION GIVEN SPECIAL CONSIDERATION BASED ON WHEN THE APPLICATION IS RECEIVED BY THE COLLEGE

TAKING OWNERSHIP

- THE COLLEGE ADMISSIONS PROCESS CALLS FOR TRUST AND A NEW KIND OF TEAMWORK; "DIRECTING" NEEDS TO GIVE WAY TO "GUIDING"
- GETTING INTO COLLEGE, DESPITE YOUR INEXPERIENCE AND BUSY SCHEDULE, IS SOMETHING YOU MUST DO FOR YOURSELF
- COLLEGE ADMISSIONS OFFICERS ARE EAGER TO HEAR ABOUT THE STUDENT FROM THE STUDENT

IT'S TIME TO BE
YOUR OWN
ADVOCATE!



Standardized Testing

*Know what the colleges on your list
are looking for...*

SAT?

ACT?

SAT II?

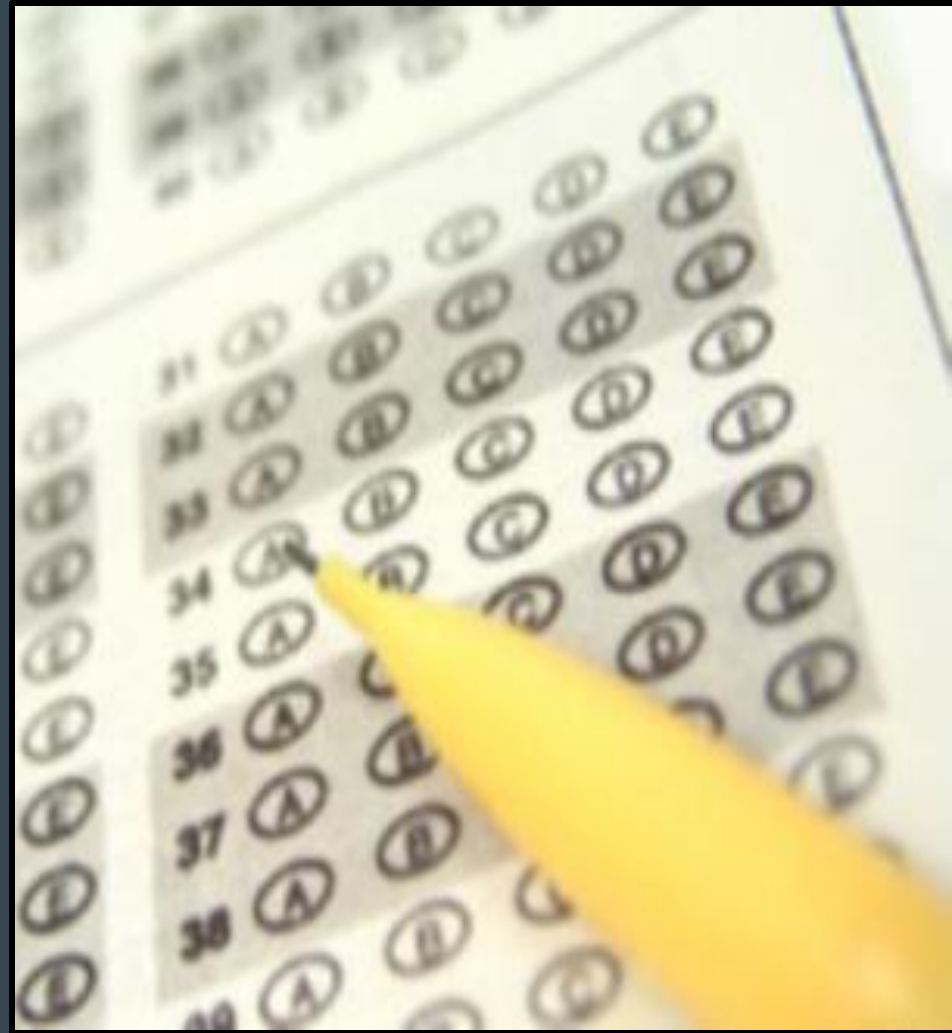
TEST OPTIONAL?

WWW.FAIRTEST.ORG



Register for the test...

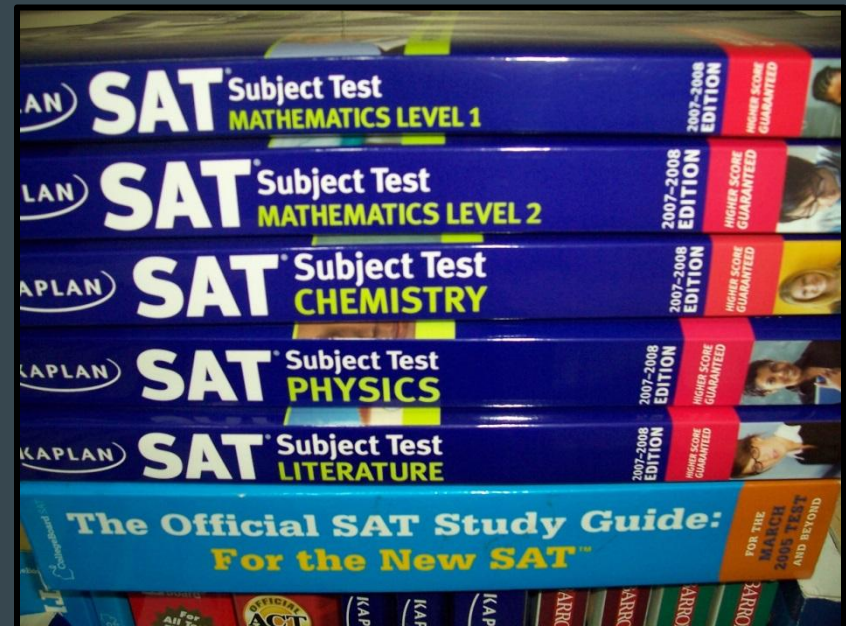
- STUDENTS REGISTER ONLINE:
SAT - WWW.COLLEGEBOARD.ORG
ACT - WWW.ACTSTUDENT.ORG
- THESE WEBSITES ALSO HAVE USEFUL RESOURCES SUCH AS PRACTICE TESTS, STUDY AND TEST-TAKING TIPS, COLLEGE SEARCHES, ETC.
- IF YOU ARE A FREE OR REDUCED LUNCH STUDENT, PLEASE SPEE YOUR COUNSELOR ABOUT A FEE WAIVER



Sat II – Subject Tests

- SELECTIVE COLLEGES REQUIRE SUBJECT TESTS FOR ADMISSION
- 1 HOUR IN LENGTH (TAKE UP TO THREE TESTS ON ONE TEST DATE)
- SCORE RANGE 200 – 800
- ALL TESTS ARE NOT OFFERED ON ALL DATES...

BE SURE TO
PLAN AHEAD!!



Test Prep/Coaching Programs

- PSAT SCORE REPORT - IDENTIFY SPECIFIC STRENGTHS AND AREAS OF NEED
- MOCK AND PRACTICE TESTS ARE AVAILABLE
- DIFFERENT PREPARATION OPTIONS:
 - TEST PREP PROGRAMS AND CLASSES
 - MHS CLASSES
 - TEST PREP BOOKS
 - READ!!



Your College Search Starts With...

Registering and logging on to



On the Guidance website.

Do a College Search...

- Choose Fit Criteria
- Location
- Academics
- Admission
- Diversity
- Institution Characteristics
- Cost
- Student Life
- Athletics
- Resources

Your Fit Criteria

Saved Searches Choose one Save Search Start Over

5 selected criteria

To refine your results, use the arrows to move your criteria into the "Must Have" and "Nice to Have" boxes.

Must Have

- Location [8]
- Major [19]
- Campus Surroundings [3]
- Institution Type
- Gender Concentration [1]

Nice to Have

A *Nice to Have* is anything that's important to you, but isn't an absolute must have.

Your Results

Your results include **162 institutions** with a fit score of 90% or above.

Fit Score ?

Academic Match ?

Highlights ▾

Cost ▾

Pick what to show ▾

Albright College
Reading, PA, Small City
4 year, Private nonprofit, United Methodist
[PIN TO COMPARE](#)



| | Average | You |
|-----|---------|-------|
| GPA | 3.31 | 3.0 ? |
| SAT | N/A | 1100 |
| ACT | N/A | N/A |

SuperMatch doesn't have sufficient application history for this institution to determine academic match.

No Highlights Available

Tuition & Fees
\$40,644
Room & Board \$11,188

Customize what you see here—Choose a category above

0 PINNED ▾ INTERESTED IN YOU 46 THINKING ABOUT 5 APPLYING TO 0 MORE !

Reference Scattergrams...

The College of New Jersey :: Ewing, NJ :: U.S.

www.tcnj.edu

General Applications Analysis Admissions Academics Cost & aid Extracurriculars

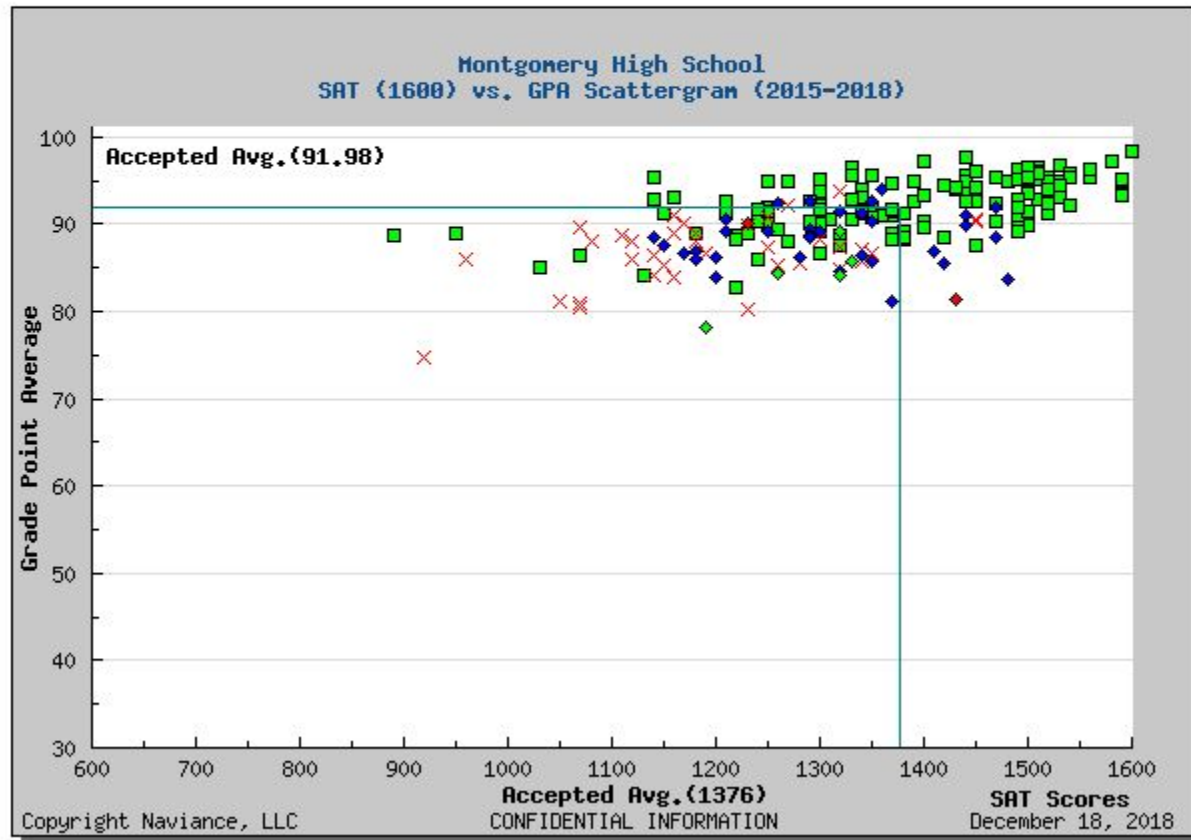
graphs statistics overlaps

Graphs

(mouseover or click on scattergram dots for more information)

 Printer-friendly page

Test type: [change other options](#)



See When College Reps are Visiting MHS...

Past College Visits

| College | Representative | Registrations | Date | Time | | |
|--|-----------------------|---------------|------------------------|----------|----------------------|------------------------|
| University of Richmond | Beth Anne Spacht | 7 | Wed September 13, 2017 | 11:15 AM | view | delete |
| Montclair State University | Stephanie Herman | 5 | Thu September 14, 2017 | 7:30 AM | view | delete |
| Savannah College of Art and Design | Taylor Rasak | 6 | Thu September 14, 2017 | 10:30 AM | view | delete |
| University of South Carolina | Anastasia Sailer | 19 | Fri September 15, 2017 | 10:30 AM | view | delete |
| University of New Hampshire at Durham | Rachel Kim | 0 | Mon September 18, 2017 | 8:15 AM | view | delete |
| University of New Hampshire at Durham | Rachel Kim | 0 | Mon September 18, 2017 | 8:15 AM | view | delete |
| Johns Hopkins University | Patrick Salmon | 28 | Mon September 18, 2017 | 9:00 AM | view | delete |
| Colgate University | Keaton Hain | 7 | Mon September 18, 2017 | 9:45 AM | view | delete |
| Wesleyan University | Jennie He | 4 | Mon September 18, 2017 | 10:30 AM | view | delete |
| Rider University | Susan Makowski | 4 | Mon September 18, 2017 | 11:15 AM | view | delete |
| Otterbein University | Jarrod Harchalk | 0 | Mon September 18, 2017 | 12:00 PM | view | delete |
| University of Pittsburgh | Jaime Hamel | 26 | Mon September 18, 2017 | 12:45 PM | view | delete |
| Bryant University | Aimee O'Connell | 1 | Mon September 18, 2017 | 1:30 PM | view | delete |
| The University of Scranton | Josh Perry | 5 | Tue September 19, 2017 | 8:15 AM | view | delete |
| Sacred Heart University | Courtney McHenry | 3 | Tue September 19, 2017 | 9:00 AM | view | delete |
| Marist College | Gina Jadelis | 10 | Tue September 19, 2017 | 11:15 AM | view | delete |
| High Point University | Megan Bachemin | 5 | Tue September 19, 2017 | 12:45 PM | view | delete |
| Ursinus College | Brittany L. Konieczny | 1 | Wed September 20, 2017 | 7:30 AM | view | delete |
| Johnson & Wales University (Providence) | Jeffrey J. DiGiacomo | 0 | Wed September 20, 2017 | 8:15 AM | view | delete |
| Haverford College | Lucia Herrmann | 2 | Wed September 20, 2017 | 9:00 AM | view | delete |
| NYU Abu Dhabi | David Kerman | 4 | Wed September 20, 2017 | 1:30 PM | view | delete |
| University of Hartford | Nellie Zigami | 0 | Fri September 22, 2017 | 7:30 AM | view | delete |
| California College of the Arts (San Francisco) | Carrie Dhillon | 0 | Fri September 22, 2017 | 9:00 AM | view | delete |
| Drew University | Marybeth Tamburro | 0 | Fri September 22, 2017 | 10:30 AM | view | delete |
| University of Rhode Island | Brad Cocking | 3 | Fri September 22, 2017 | 12:45 PM | view | delete |
| Northwestern University | Fritz T. Burgher | 44 | Mon September 25, 2017 | 7:30 AM | view | delete |
| Carnegie Mellon University | Nicholas Hinkle | 47 | Mon September 25, 2017 | 12:45 PM | view | delete |
| University of Cincinnati | Melissa Baer | 0 | Mon September 25, 2017 | 1:30 PM | view | delete |
| Washington College | Lexie Sumner | 0 | Tue September 26, 2017 | 7:30 AM | view | delete |
| University of Southern California | Nicole Molina | 39 | Tue September 26, 2017 | 9:45 AM | view | delete |
| Villanova University | Ryan M. Jannos | 45 | Tue September 26, 2017 | 10:30 AM | view | delete |
| Pace University, New York City | Liam Tuohey | 4 | Tue September 26, 2017 | 11:15 AM | view | delete |
| American University | Ken Haltenhof | 12 | Tue September 26, 2017 | 12:45 PM | view | delete |
| Cabrini University | Michael Bennett | 1 | Tue September 26, 2017 | 1:30 PM | view | delete |
| Pennsylvania State University - Altoona | Donovin Lindsay | 1 | Wed September 27, 2017 | 7:30 AM | view | delete |
| Pennsylvania State University - Altoona Canceled | Donovin Lindsay | 0 | Wed September 27, 2017 | 7:30 AM | view | delete |
| Pennsylvania State University - Altoona Canceled | Donovin Lindsay | 0 | Wed September 27, 2017 | 7:30 AM | view | delete |
| Pennsylvania State University - Altoona Canceled | Donovin Lindsay | 0 | Wed September 27, 2017 | 7:30 AM | view | delete |
| Connecticut College | Cassie Greenbaum | 3 | Wed September 27, 2017 | 8:15 AM | view | delete |
| Rensselaer Polytechnic Institute | Hannah Simms | 0 | Wed September 27, 2017 | 9:00 AM | view | delete |
| Rensselaer Polytechnic Institute | Hannah Simms | 16 | Wed September 27, 2017 | 9:00 AM | view | delete |
| Franklin & Marshall College | Kate Jacobson | 11 | Wed September 27, 2017 | 9:45 AM | view | delete |
| Franklin & Marshall College | Kate Jacobson | 1 | Wed September 27, 2017 | 9:45 AM | view | delete |
| Vanderbilt University | Scotty Kominkiewicz | 48 | Wed September 27, 2017 | 10:30 AM | view | delete |
| Widener University | Scotty Kominkiewicz | 48 | Wed September 27, 2017 | 10:30 AM | view | delete |

- SIGN UP TO ATTEND MEETINGS VIA NAVIANCE
- MEETING REMINDERS E-MAILED A DAY BEFORE COLLEGE VISIT
- TEACHERS MUST GIVE YOU A PASS TO ATTEND!

Final Thoughts on the College Search...



- FROM ALL OF YOUR RESEARCH, MAKE A LIST OF 10-12 SCHOOLS THAT ARE POTENTIAL FITS
- DO MORE EXTENSIVE RESEARCH ON THOSE SCHOOLS
- TRIM THAT LIST TO EIGHT TO TEN BY SEPTEMBER OF YOUR SENIOR YEAR AND BEGIN APPLYING

This is an exciting time!



and...

START

Good luck!

- REMEMBER TO HAVE FUN VISITING CAMPUSES AND LEARNING ABOUT WHAT MAKES EACH ONE UNIQUE
- REMEMBER THAT THERE IS MORE THAN ONE COLLEGE OUT THERE FOR YOU
- TRY TO MINIMIZE STRESS BY KEEPING ALL LINES OF COMMUNICATION OPEN AND SEEING YOUR COUNSELOR OFTEN